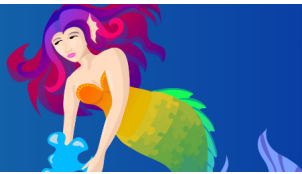


# FANTASTIQUES PUZZLES



## MINI SOLO ADULTE

Wanted!  
Ravensburger  
300 pièces



<b>1</b>	HENRY MARINE	<b>24:12</b>	<b>17</b>	ROSE JULIE	<b>54:01</b>
<b>2</b>	GIRARD Flavie	<b>28:19</b>	<b>18</b>	HAMERY Lucas	<b>57:10</b>
<b>3</b>	BEAUSEIGNEUR	<b>28:37</b>	<b>19</b>	ISAMBARD Audrey	<b>1:00:00</b>
<b>4</b>	MARTIN Eléonore	<b>28:49</b>	<b>20</b>	BOUVET Rozenn	<b>1:02:26</b>
<b>5</b>	CHÉDEMAIL Marine	<b>29:55</b>	<b>21</b>	LEBLANC Sandrine	<b>1:08:58</b>
<b>6</b>	QUÉMERAIS Laurie	<b>33:26</b>	<b>22</b>	COLAS NATHALIE	<b>1:11:16</b>
<b>7</b>	POTIRON Tiphaine	<b>35:40</b>	<b>23</b>	AMETTE Marie-	<b>1:20:12</b>
<b>8</b>	ANDREA Catois	<b>36:19</b>	<b>24</b>	BOURY Soline	<b>1:27:04</b>
<b>9</b>	GUYOT-SAILLY	<b>37:09</b>	<b>25</b>	ROYER Lucile	<b>1:29:43</b>
<b>10</b>	GALLAND SOPHIE	<b>38:32</b>	<b>26</b>	LAIGNEL Bénédicte	<b>273p</b>
<b>11</b>	GUILLEMONT Marion	<b>45:04</b>	<b>27</b>	HAMERY David	<b>251p</b>
<b>12</b>	LAMBALAIS Jean-	<b>45:52</b>	<b>28</b>	EVELYNE BOSCHER	<b>216p</b>
<b>13</b>	PARGUEL Sophie	<b>46:20</b>	<b>29</b>	GIGAN Marielle	<b>211p</b>
<b>14</b>	TCHOUBAR Marine	<b>46:24</b>	<b>30</b>	MARIE-LAURENCE	<b>N/A</b>
<b>15</b>	LASPOUMADÈRES	<b>48:09</b>			
<b>16</b>	CHERMAT Jenna	<b>50:08</b>			